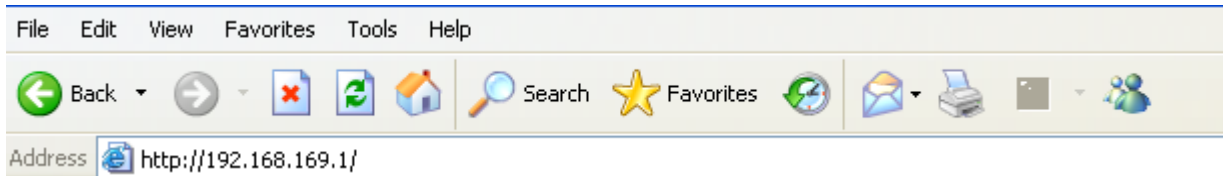




How to Update firmware

Step 1 Open the web browser and type the IP address of the device in the address bar (default is 192.168.169.1). Press Enter.

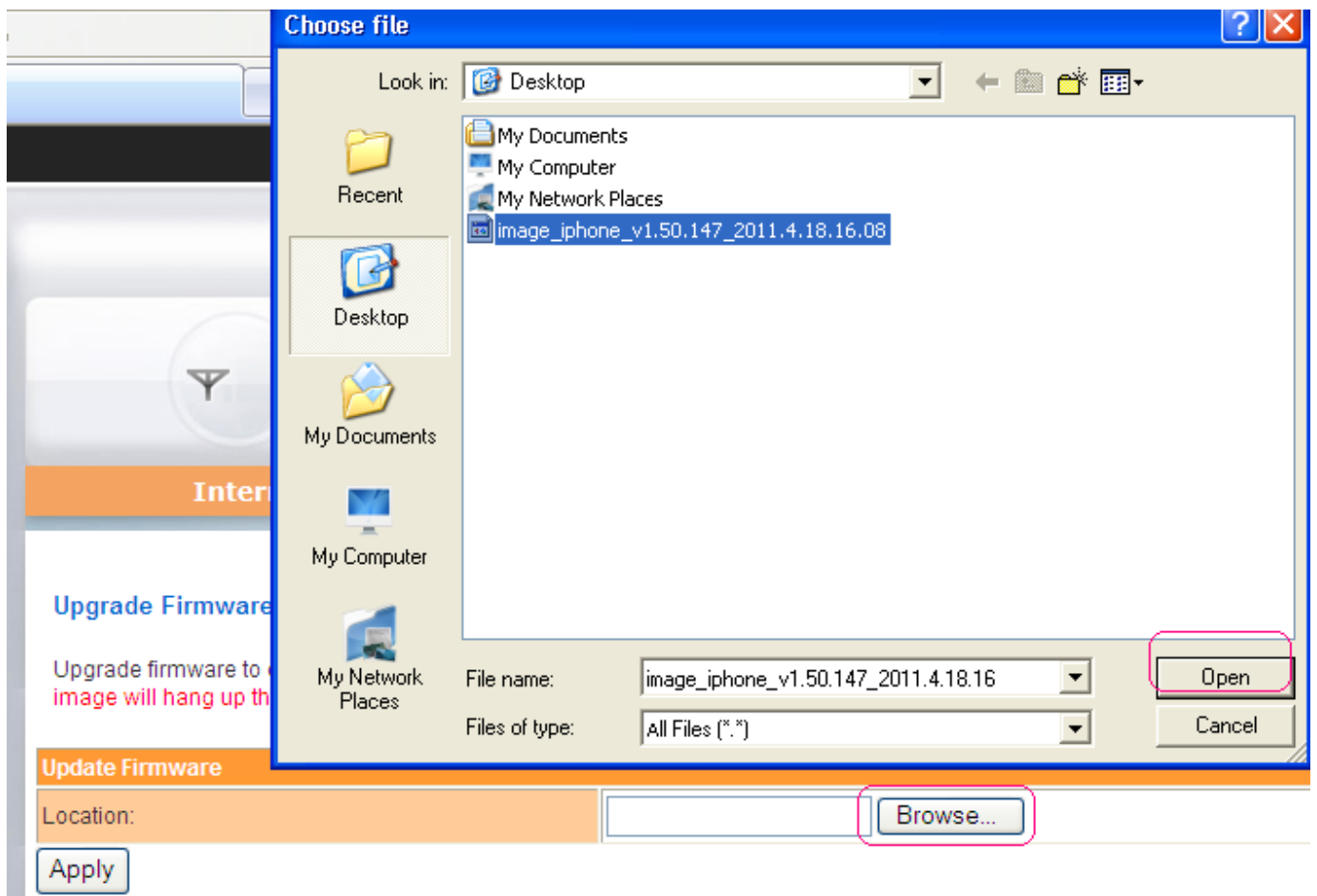


Step 2 Type the username and password in the login page, the default username and password both are admin, click OK to log into the device.



Note: Please do remember to pull out the data card before perform the next step.

Step 3: Click "settings" > Admin > upload", choosing the software version which is preserved in your hard disk in advance that you want to update.



Step4: Do remember: after updating, it should be loaded factory defaults by configuring software or by hand. Two ways' effect are the same.

1) Click "settings" > Admin > "settings", then choose the "Load Factory Defaults" in this interface.



Settings Management

You might save system settings by exporting them to a configuration file, restore them by importing the file, or reset them to factory default

Export Settings	
Export Button	<input type="button" value="Export"/>

Export LOG	
Debug Switch	<input type="button" value="open"/> <input type="button" value="close"/>
Export Button	<input type="button" value="Export"/>

Import Settings	
Settings file location	<input type="button" value="选择文件"/> 未选择文件
<input type="button" value="Import"/> <input type="button" value="Cancel"/>	

Load Factory Defaults	
Load Default Button	<input type="button" value="Load Default"/>

2) Pressing the reset button of router by using acicular article for more than 5s. The 2G/3G led light is Blue flashing when you load factory defaults.

